



EASIACCESS CD

QUICK START GUIDE

Version L
12/08/2013

Envirodata Weather Stations Pty Ltd
42-44 Percy Street, Warwick
Queensland, Australia, 4370
Phone (07) 4661 4699 or (Int) +61 7 46614699
Fax (07) 4661 2485 or (Int) +61 7 46612485

www.envirodata.com.au

ACCESS CODES

TABLE OF CONTENTS

ACCESS CODES.....	2
TABLE OF CONTENTS.....	3
INSTALL EASIAACCESS	4
RUNNING EASIAACCESS.....	11
ENTER ACCESS CODES	13
USING EASIAACCESS	14
Welcome Screen	14
Connect to Weather Station	15
Current Readings.....	16
Collect Data	17
Disconnect from Weather Station	17
View/Graph Data.....	17
Notes on COM Ports & USB converters	18
MANUAL INSTALLATION	19
Manually Uninstall Software	19
Manually Install Software	19
FOR MORE HELP	19

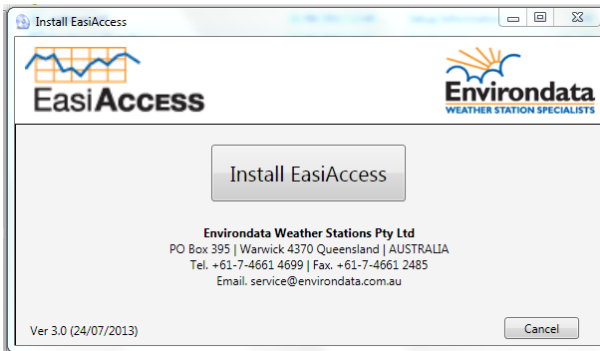
INSTALL ESIACCESS

(Quickstart Guide Section)

Insert the EasiAccess CD into your CD drive.

An Envirodata window should appear on your screen after several seconds.

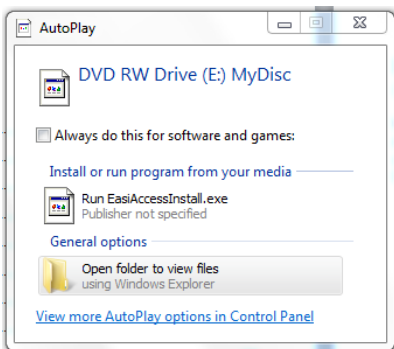
Click the " **Install EasiAccess** " button, to install EasiAccess.



1. Click 'Install EasiAccess'

After several seconds, the Setup EasiAccess wizard on the following page should appear.

NOTE: If the window does not appear when you insert the CD, it means you do not have 'auto-run' enabled.



To manually run the CD, open 'My Computer' on your desktop (or in your Start Menu), and then click on the icon of the appropriate CD Drive, the Envirodata window will appear.

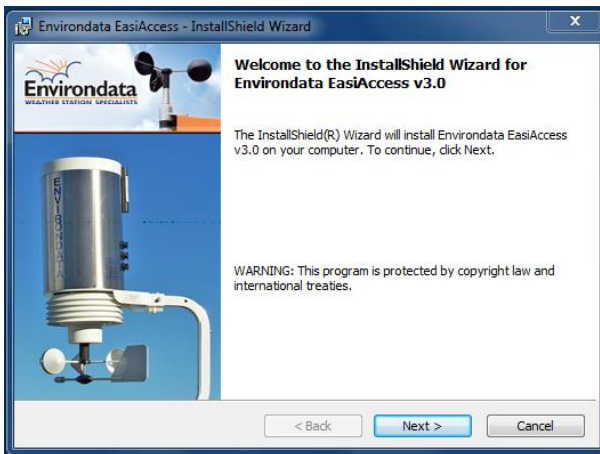
Select "Run EasiAccessInstall.exe" to start the installer – this will display the window above.

NOTE: With Windows 8, the User Account Control screen will ask you if you allow this program to make changes to your computer. Please click the "Yes" button to continue.



2. Envirodata Weather Station Specialists

Click 'Next' to continue



3. InstallShield Wizard

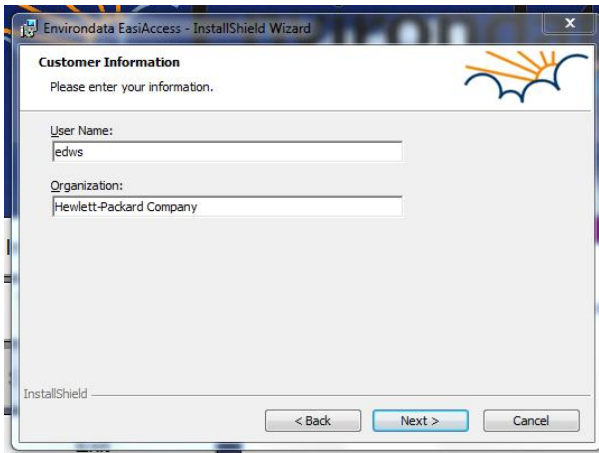
Click 'Next' to continue



4. Accept the licence

This is the 'End User Licence Agreement' (EULA). You need to read and agree to this to install EasiAccess.

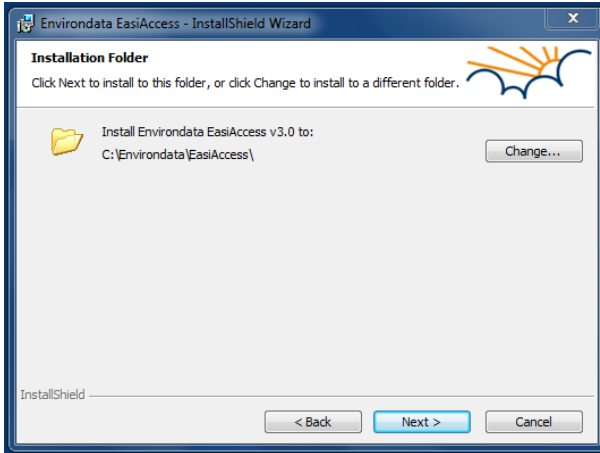
If you agree, click on 'I accept the agreement' then click 'Next' to continue.



5. Customer Information

Enter your user name and organization details.

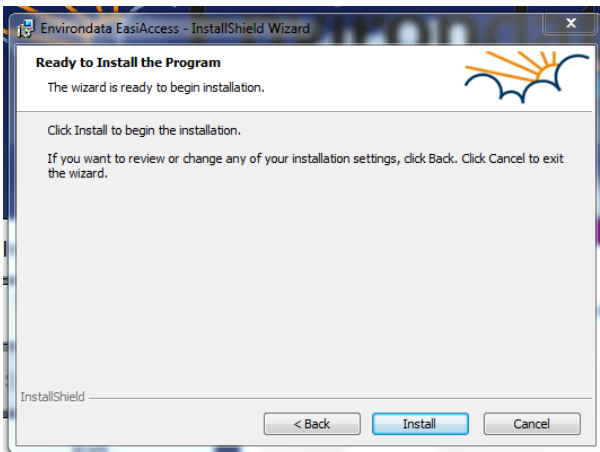
Click "Next" to continue



6. Installation Folder

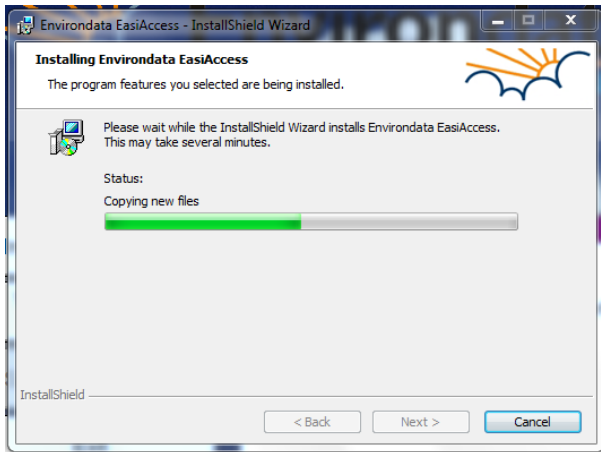
EasiAccess will install to the specified location.

Press "Next" to continue



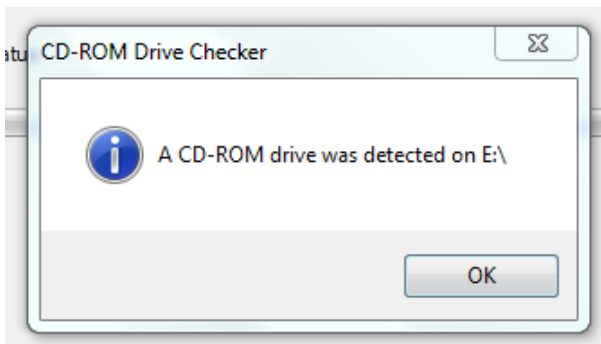
7. Ready to Install

Press "Install" to begin the Installation.



8. Installation process

Once installation has completed, Click "Next" to continue

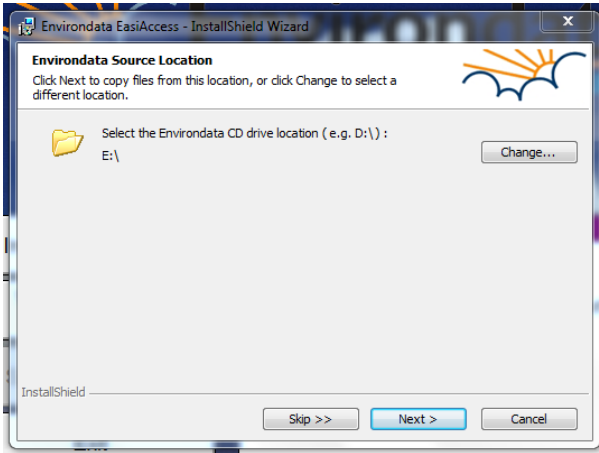


9. CD-Rom Drive Checker

EasiAccess installer will now detect the drive that your installation CD is running from.

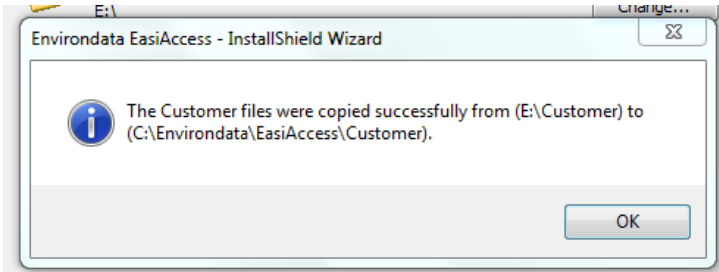
Please check that this is the correct drive, as your weather station specific files are on the installation CD.

Click "OK". If the detected drive is not the one with the installation CD, it can be changed on the next screen.



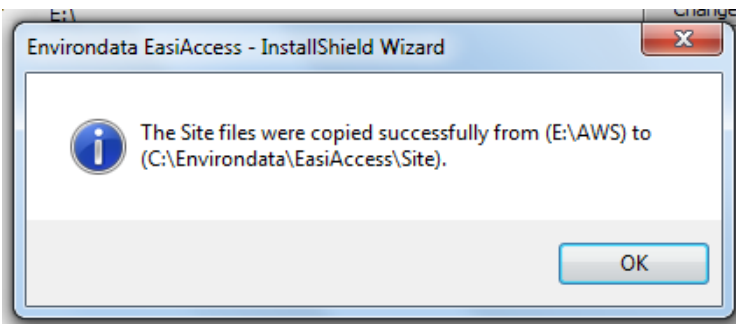
10. Confirm CD Location

Check the CD drive is correct and then click "Next" to continue



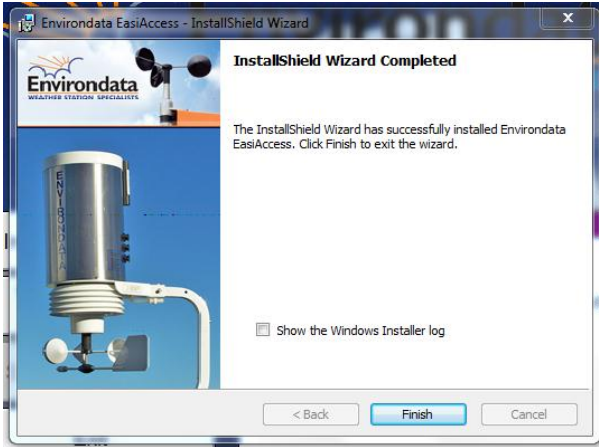
10. Customer files copied

Click "OK" to continue



11. Site (weather station) files copied

Click "OK" to continue



12. InstallShield Wizard Completed

Click "Finish" to complete the Installation

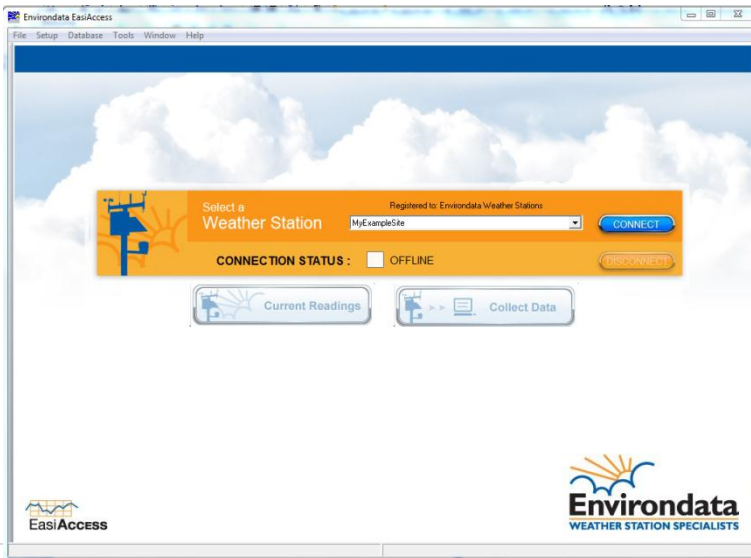
The install process is now complete. The EasiAccess software should now be open on your computer, and ready for use.

RUNNING EASIAACCESS

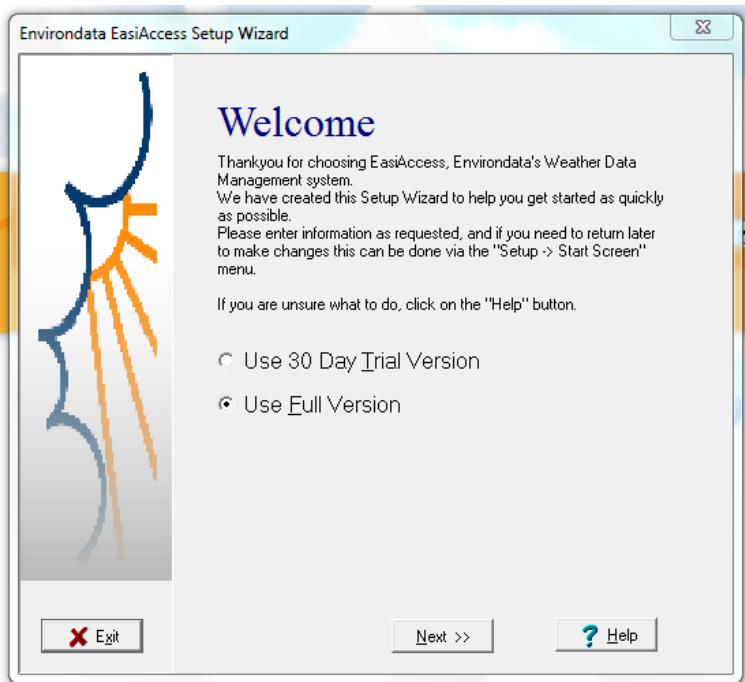
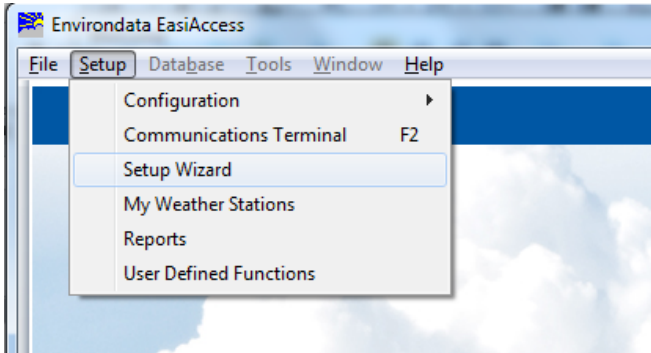
Double-click on the Enviroidata EasiAccess icon on your desktop to start the application. This is your main working screen.



The first time you run the software you will need to register your access codes. Click on the “CONNECT” button to get to the following screen.



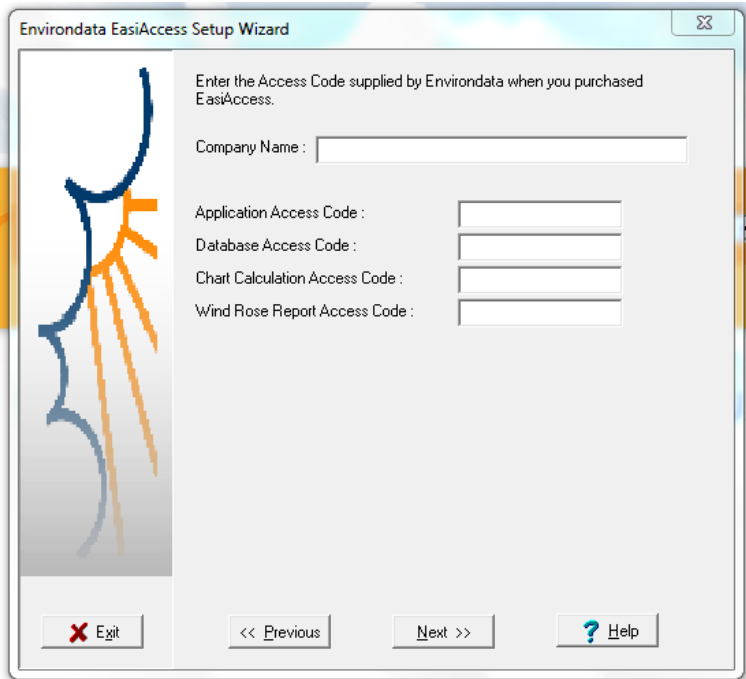
Select "Setup" and "Setup Wizard" from the Menu options.



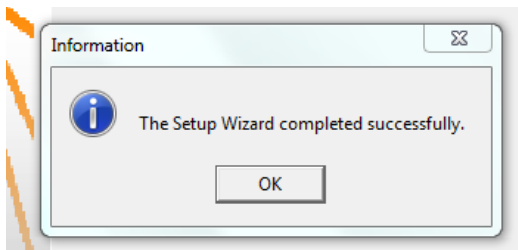
Select the "Use Full Version" option and then click "Next"

ENTER ACCESS CODES

You are now required to enter the Registration information and access codes supplied with the software. Please refer to the attached page containing this information.



Once the Company name, and access codes have been entered exactly as on the attached page, click "Next" to continue.



Press "OK" and "Finished" when prompted. Software is now ready to use.

USING EASIACCESS

Envirodata advises users to read the full EasiAccess handbook.

This QuickStart guide is a quick reference for your convenience only.

Welcome Screen

The functions in EasiAccess can be divided into two basic types.

- Those that involve connecting to the station, such as Downloading data from the weather station, or viewing the current weather conditions live on screen.
- Those that involve viewing the data in reports, that is, viewing weather data stored on the PC.

The EasiAccess Welcome screen therefore guides the user to either:

- Connect to Weather Station or
- View collected Weather Data



The CONNECT button will allow you to connect to your Weather Station and:

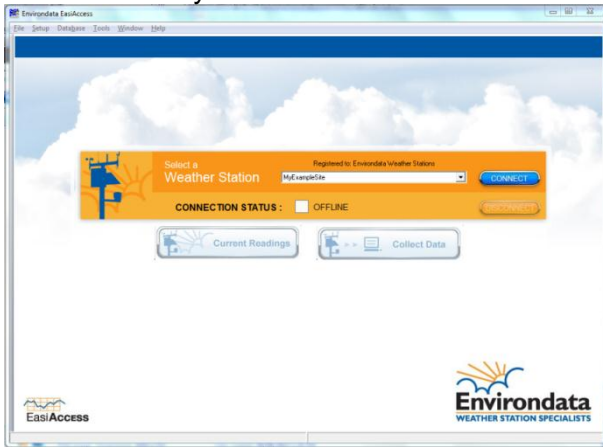
- Display the Current Readings information or
- Download data from your Weather Station.

The VIEW DATA button will allow you to display graphs and reports from data that has already been downloaded and is in the Database for that weather station.

Connect to Weather Station

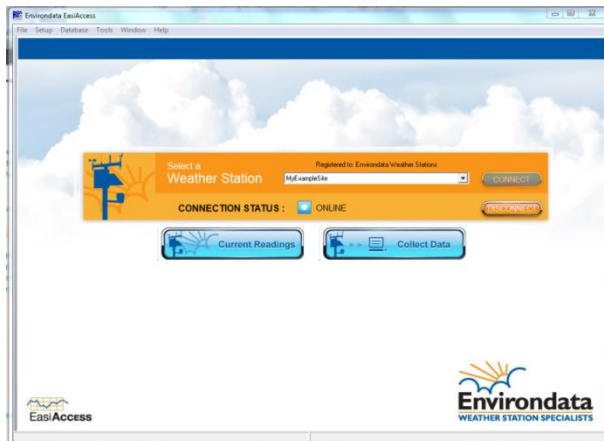
The EasiAccess Connect screen allows you to connect to a Weather Station in order to:

- Display the Current Readings information or
- Download data from your Weather Station.



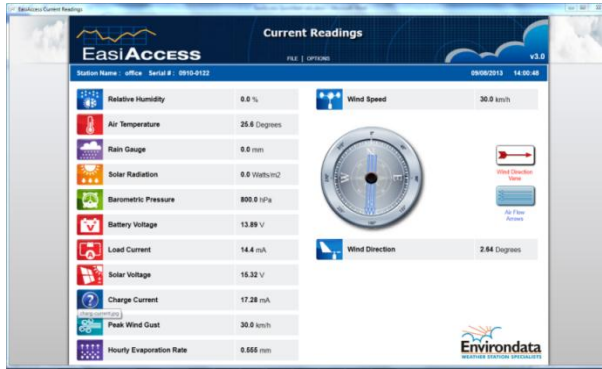
Select the weather station you wish to connect to from the drop down list. After ensuring that your weather station (modem or data courier) is connected to your computer, click the "CONNECT" button.

The Connection Status changes to ONLINE and the Current Readings and Collect Data buttons become blue and enabled.



Current Readings

Once connected, you may click the "Current Readings" button to open the Current Readings graphical chart.



Notes:

This is only for New Weather Station Models (including WeatherMaster 3000, Weather Maestro and WeatherMate 3000)

On initial start-up only: The system will create a default Current Readings Screen with all the sensors that are programmed into the Weather Station.

If your sensor values display in the current readings *screen* as *?.?* and have values in the current readings *table* your weather station may require an updated schedule file. Please contact Envirodata for assistance.

If your sensor *ICON* displays a *"?"*,

Collect Data

Click the "Collect Data" button. Wait for the data to download. This downloads all data logged in your weather station since it has been last downloaded, re- set, or re-programmed.

For download options, select "Collection Options" from the "Tools" or "Database" menu, and uncheck the "Default" checkbox.

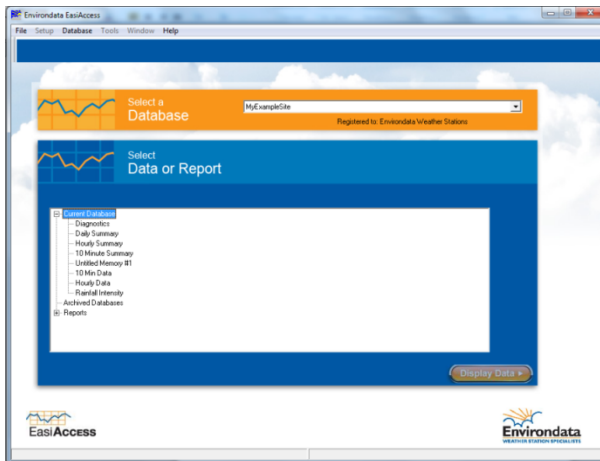
Disconnect from Weather Station

Once you have finished using your weather station, disconnect by clicking the "Disconnect" button.

View/Graph Data

View your data as a table or a graph and print it to your printer. Select a table to view from the "Current" database folder in the bottom window. (The current database is opened by clicking the "+" beside it.)

Select a table (eg. Hourly Summary) and click "Display Data". The weather station needs to have been logging data for sufficient time [at least 2 data points] before there will be data to display. Otherwise the tables will be empty. (You can use the demonstration site to explore the features of viewing and graphing data.)



Notes on COM Ports & USB converters

Most desktop computers have at least one serial COM port, and this is usually COM1.

Many new laptop computers don't provide a serial COM port. If you have a computer that has no COM port, you require a USB-Serial converter. Envirodata has supplied a USB-Serial converter (US10) with every data logger or weather station supplied since 2008. If you don't have this, one can be obtained from Envirodata, or most computer stores. The USB-Serial device installs a "virtual" serial COM port on your computer, and this port number would be selected in the EasiAccess software above. For further assistance with USB-Serial converters, please refer to the supplied US10 manual or contact us.

MANUAL INSTALLATION

Manually Uninstall Software

- To manually uninstall your existing software, go to the Start Menu and to Control Panel of your computer.
- Depending on your Windows System, look for:
 - Windows XP - Add/Remove Programs
 - Windows 7 - Programs – Uninstall a program
 - Windows 8 - Programs and Features
- Find Environdata EasiAccess in the list of programs and click on it.
- Once selected, click the Uninstall button to remove the old program.
- If it is uninstalled, run the CD again to install the new Software.

Manually Install Software

- To manually run the CD, open 'My Computer' on your desktop (or in your Start Menu), and then click (or double click) on the icon of the appropriate CD Drive.
- Open the “EasiAccess Setup” folder.
- Double-click the setup.exe file to manually install the software.

FOR MORE HELP

For detailed information on the EasiAccess program, see the EasiAccess Handbook on the CD.

For detailed information on your weather station, see the product handbook (both in the handbook and on the CD.)

All brochures and handbooks on the CD are in “.PDF” format. *PDF files (on the CD) can be viewed with Adobe Acrobat Reader.*