

WeatherMation LIVE

Core Module

Version 1.5
20 August 2015



Envirodata Australia Pty Ltd
42-44 Percy Street Warwick
Queensland 4370 Australia
Phone: (07) 4661 4699
Fax: (07) 4661 2485
International Phone: +61 7 4661 4699
International Fax: +61 7 4661 2485
Email: sales@envirodata.com.au

<http://www.envirodata.com.au>

Material in this handbook is Copyright.
All rights reserved by the publishers.
No reproduction without the prior permission of the publishers.



Table of Contents

Introduction	3
Using the System.....	3
1. Menu Options	4
2. Current Readings.....	5
3. Current Readings Graphs	6
4. Historical Readings.....	6
5. All Current Sensors.....	10
6. Download Data.....	8
7. Reports	8
8. Current Readings Screen Layout - Customize Current Readings Screen	9
9. Current Readings Graphs Layout	10
10. Alerts Log.....	10
11. About WeatherMation	12

Introduction

Envirodata's WeatherMation software has been developed to download, display and respond to the weather data from your weather stations, automatically.

WeatherMation's Core Module, as you see in the WeatherMation LIVE Service, provides your users all of your weather data from each of your connected weather stations. This data is on a Webpage to be accessed via the internet on any browser from a computer or mobile device.

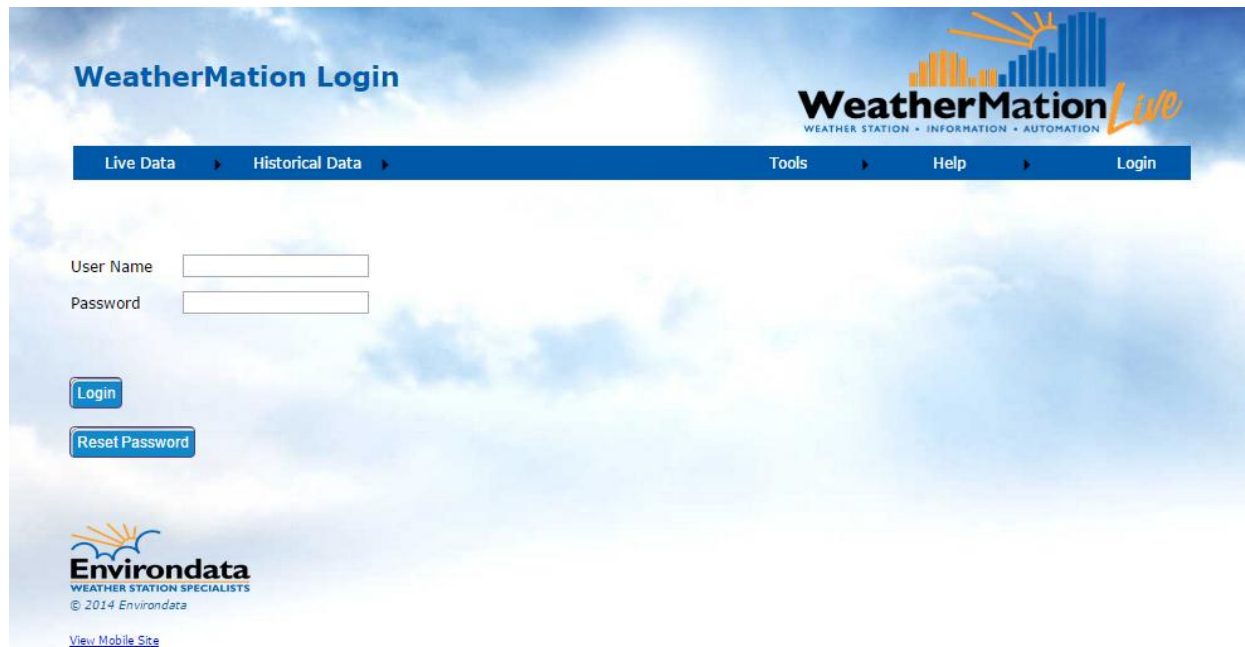
Using the System

Go to www.weathermation.net.au

You will see the Login Page – please enter you User Name and Password that were provided to you.

Click on the Login button to access the system

(If you need to change your password, click on the Reset Password button)



WeatherMation Login

Live Data > Historical Data > Tools > Help > Login

User Name

Password

Login

Reset Password

Envirodata
WEATHER STATION SPECIALISTS
© 2014 Envirodata
[View Mobile Site](#)

1. Menu Options

- **Live Data**
 - **Current Readings** - displays the customized Current Readings from your weather station.
 - **Current Readings Graphs** - displays the Current Readings Graph Reports from your weather station. This is ONLY available if you have purchased the Reports Module.
- **Historical Data**
 - **Historical Readings** - displays historical weather data (memory data) from your weather station.
 - **Reports** – This allows you to setup, save and run reports based on your historical data. This is ONLY available if you have bought the Reports Module and if you have Reporting permission.
 - **Download Data** – to download your historical weather data as a .csv file.
- **Tools**
 - **Current Readings Screen Layout** – customize your Current Readings Display page. This is ONLY available if you have configuration permission.
 - **Current Readings Graphs Layout** – customize your Current Readings Graph Reports page. This is ONLY available if you have bought the Reports Module and if you have configuration permission.
 - **Alerts and Notifications Log** – displays a log of all your Alerts. ONLY available if you have bought the Alerts Module.
 - **Alerts and Notifications Setup Report** – displays the Alerts and Notifications as it is setup per User. ONLY available if you have bought the Alerts Module.
 - **All Current Sensors** - displays the full list of the Current Readings from your weather station.
 - **About** – information about the system.
- **Help**
 - Web, Alerts and Reports Manuals
- **Login/Logout** – if you want to change the user.



2. Current Readings

Once logged in, you will get the Main Page for displaying your weather station's Current Readings

Using the Current Readings Page

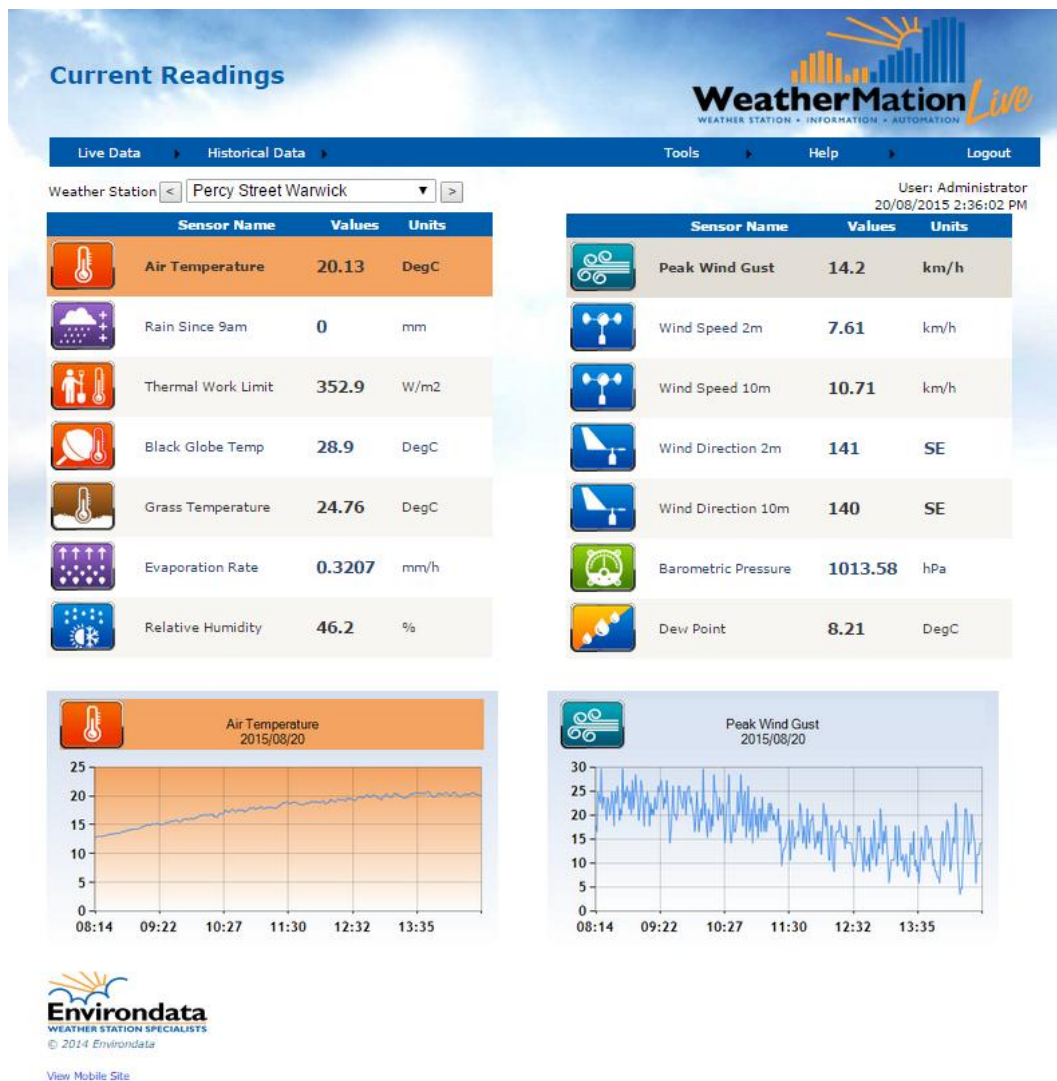
If you have more than 1 weather station linked to this service, you can select which weather station's data to display by clicking the arrow on the drop-down box and selecting a new weather station or using the < and > arrow buttons to scroll through your stations.

In order to see the graphs at the bottom of each table, you have to click on any sensor. This graph will then display the last 30 records of Current Reading values for the selected sensor.

Note:

You may have the optional Alerts & Notifications Module and have On-Screen Alerts setup. E.g. Air Temperature in the below image has a yellow background to indicate the temperature has reached the settings to display a yellow background. 7 settings per sensor are possible.

You can customize the display and sequence of the sensors on this page using the Current Readings Screen Layout option under Tools. See Section 7 for more information.



3. Current Readings Graphs

This is part of the WeatherMation LIVE Reports module. Please see the **Report Module Handbook** on how to use this.

4. Historical Readings

“Historical Readings” displays the historical weather data from your chosen weather station that has been downloaded into the WeatherMation Database.

The date & time stamp for each record is for the END of the memory period.

E.g. Hourly Data with the date & time stamp of 20/02/2015 16:00 is data recorded from 15:00 to 16:00 on the 20/02/2015.

Daily data with the date & time stamp of 20/02/2015 09:00 is the 24 hours from 19/02/2015 9:01 to 20/02/2015 09:00, which is a standard meteorological recording period. Hence the minimum Air Temperature value in the 20/02/2015 daily summary is normally for the morning of the date (20/02/2015) and maximum Air Temperature is normally from the afternoon of the day before (19/02/2015 in our example).

Using the Historical Readings Page

If you have more than 1 weather station linked to this software, you can select which weather station’s data to display by clicking the arrow on the drop-down box and selecting a new weather station.

You can select what historical data to display by clicking the arrow on the drop-down box and selecting a different memory. E.g. Daily Summary is the default, but you can select Hourly Data or 10-Minute Data or 5-Minute Data etc (The options available depend on each of your weather stations’ programs).

The data displayed is the LATEST record downloaded from the weather station for the particular memory. Please note the date/time on the right side.

In order to see the graphs below the data, you have to click on any sensor. This graph will then display a history of records for the selected Memory values for the selected sensor.

Using the Graph Data

- Previous button - you will get the previous period’s historical data displayed on the graph.
- Next button - you will get the next period’s historical data displayed on the graph. The Next Period can only be displayed if you have gone and displayed older historical data.
- Download Graph Data – will download into a .csv file only the data displayed on the graph currently.

Historical Hourly Data

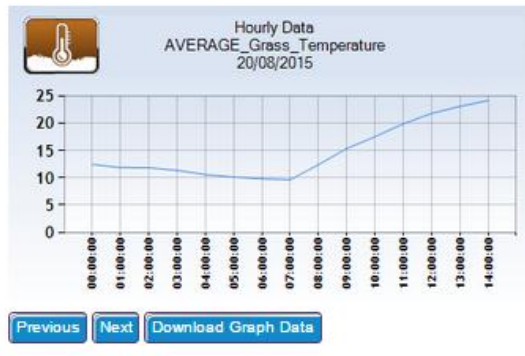
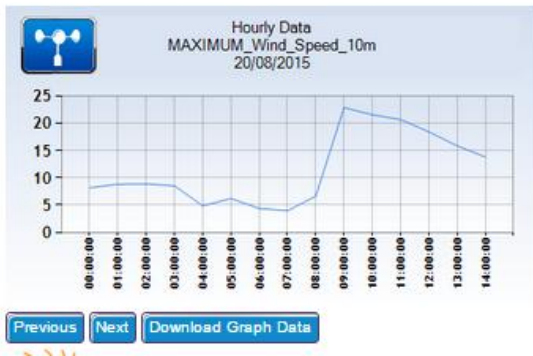


Live Data | Historical Data | Tools | Help | Logout

Weather Station: Memory: User: Administrator
 20/08/2015 2:00:00 PM

Sensor Name	Values	Units
MAXIMUM Wind Speed 10m	13.78	km/h
AVERAGE Wind Speed 10m	8.5	km/h
STDEV Wind Speed 10m	2.78	km/h
AVERAGE Wind Direction 10m	141.54	SE
S-THETA Wind Direction 10m	36.48	Degrees
MAXIMUM Peak Wind Gust	17.75	km/h
AVERAGE Relative Humidity	47	%
AVERAGE Air Temperature	20.18	DegC
TOTAL Rain Gauge	0	mm
AVERAGE Solar Radiation	471.48	W/m2
AVERAGE Barometric Pressure	1014.9	hPa

Sensor Name	Values	Units
AVERAGE Grass Temperature	24.15	DegC
MAXIMUM Wind Speed 2m	9.97	km/h
AVERAGE Wind Speed 2m	6.07	km/h
AVERAGE Black Globe Temp	29.79	DegC
AVERAGE Baro Pressure kPa	96.09	kPa
AVERAGE Wet Bulb Temp	13.34	DegC
AVERAGE Thermal Work Limit	341.98	W/m2
AVERAGE Wet Bulb Globe Temp	17.3	DegC
CURRENT Evaporation Rate	0.3207	mm/h
AVERAGE Battery Voltage	13.96	V
AVERAGE Solar Voltage	20.08	V



5. Reports

This is part of the optional WeatherMation LIVE Reports module. Please see the **Report Module Handbook** on how to use this.

6. Download Data

Download Memory Data allows you to download your weather station's saved historical data to your PC or device as a .csv file. You can then open this file in other programs like Notepad or Excel.

Using the Download Historical Memory Data Page

If you have more than 1 weather station linked to this software, you can select which weather station's data to display by clicking the arrow on the drop-down box and selecting your chosen weather station.

You can select what historical data to download by clicking the arrow on the drop-down box and selecting your chosen data set (memory). E.g. Daily Summary is the default, but you can select Hourly Data or 10-Minute Data or 5-Minute Data (The options available depend on your weather station program).

Enter a "Date From" and "Date To" value. If you click in the box, a calendar will be displayed.

Click the "Download 'Daily Summary'" button to download the selected data to your PC as a .csv file. (N.B. This button's name will vary depending on WHAT historical data you are downloading).

Download Historical Memory Data

WeatherMation Live
WEATHER STATION • INFORMATION • AUTOMATION

Live Data | Historical Data | Tools | Help | Logout

Weather Station: Percy Street Warwick
Memory: Daily Summary
Date From:
Date To:

[Download Daily Summary](#)

Envirodata
WEATHER STATION SPECIALISTS
© 2014 Envirodata

User: Administrator

7. Current Readings Screen Layout - Customize Current Readings Screen

The Customize Current Readings Screen allows you to setup which sensors from your weather station you would like to be displayed on the Main Current Readings Screen. You can also select in which order they will appear and what type of graph you'd like for them. *Only a user assigned layout setup access will be able to make these changes.*

Using the Customize Current Readings Page

If you have more than 1 weather station linked to this software, you can select which weather station's data to display by clicking the arrow on the drop-down box and selecting your chosen weather station.

- ALL sensors that are AVAILABLE to be displayed are on the LEFT side of the selection screen
- All Sensors and the order in which they are displayed selected for display on the LEFT side of your Current Readings Screen are shown in the MIDDLE Table
- All Sensors and the order in which they are displayed selected for display on the RIGHT side of your Current Readings Screen are shown in the RIGHT Table

To add a Sensor from the custom display:

Click on the sensor's **Left >** button for it to be displayed on the LEFT side or
Click on the sensor's **Right >** button for it to be displayed on the RIGHT side

To remove a Sensor from the custom display:

Click on the sensor on the MIDDLE or RIGHT side tables and click on the x button

To change the order in which sensors are displayed

Click on the sensor on the MIDDLE or RIGHT side tables and click on the UP or DOWN arrow buttons

To setup the Type of Graph

Click on the sensor on the MIDDLE or RIGHT side tables and select your preferred graph type from the dropdown box in the top right corner.

Available Types:

- Line or Bar for most sensors.
- Wind Direction has an added option for Compass.

8. Current Readings Graphs Layout

This is part of the Optional WeatherMation LIVE Reports module. Please see the **Report Module Handbook** if you have purchased the Reports Module for details on how to use this feature.

9. Alerts and Notifications Log

This is part of the Optional WeatherMation LIVE Alerts and Notifications module. Please see the **Alerts and Notifications Module Handbook** if you have purchased the alerts module for details on how to use this feature.

10. Alerts and Notifications Setup Report

This is part of the Optional WeatherMation LIVE Alerts and Notifications module. Please see the **Alerts and Notifications Module Handbook** if you have purchased the alerts module for details on how to use this feature.

11. All Current Sensors

Using the All Current Sensors Page

This page should mostly be used for Diagnostics. As the Current Readings page can be customised to only display your most important sensors, this page will show you a list of all the sensors from your weather station and the latest Current Reading from each.

This page cannot be customized and just displays the sensors in the order they are programmed into your weather station.

This will be useful if you want to check a specific value like Battery Voltage, but don't always want it to be displayed on your main page.

If you have more than 1 weather station linked to this software, you can select which weather station's data to display by clicking the arrow on the drop-down box and selecting a new weather station or using the < and > arrow buttons to scroll through your stations.

Notes:

You may have the optional Alerts & Notifications Module and have On-Screen Alerts setup. E.g. Air Temperature in the below image has a yellow background to indicate the temperature has reached the settings to display a yellow background. 7 settings per sensor are possible.

This page does not have any graphs.

The screenshot displays the 'All Current Readings Sensors' interface for the 'Percy Street Warwick' weather station. The page features a navigation bar with 'Live Data', 'Historical Data', 'Tools', 'Help', and 'Logout' options. A user login information box shows 'User: Administrator' and the timestamp '20/08/2015 2:41:03 PM'. The main content is a table of sensor readings:

Sensor Name	Values	Units
Wind Speed 10m	13.19	km/h
Wind Direction 10m	176	S
Relative Humidity	46.3	%
Air Temperature	20.23	DegC
Rain Gauge	0	mm
Solar Radiation	353.33	W/m2
Barometric Pressure	1014.78	hPa
Grass Temperature	24.7	DegC
Wind Speed 2m	10.97	km/h
Wind Direction 2m	178	S

12. About WeatherMation

The About WeatherMation screen will show you some contact information for Environdata. It also displays the software version.

About WeatherMation

WeatherMation Live
WEATHER STATION • INFORMATION • AUTOMATION

Live Data Historical Data Tools Help Logout

User: Administrator
V1.4 05/02/2015

Environdata Weather Stations Pty Ltd
PO Box 395
Warwick 4370
Queensland
AUSTRALIA

Tel. +61-7-4661 4699
Fax. +61-7-4661 2485

Email. weathermation@environdata.com.au
www.environdata.com.au

Environdata
WEATHER STATION SPECIALISTS
© 2014 Environdata